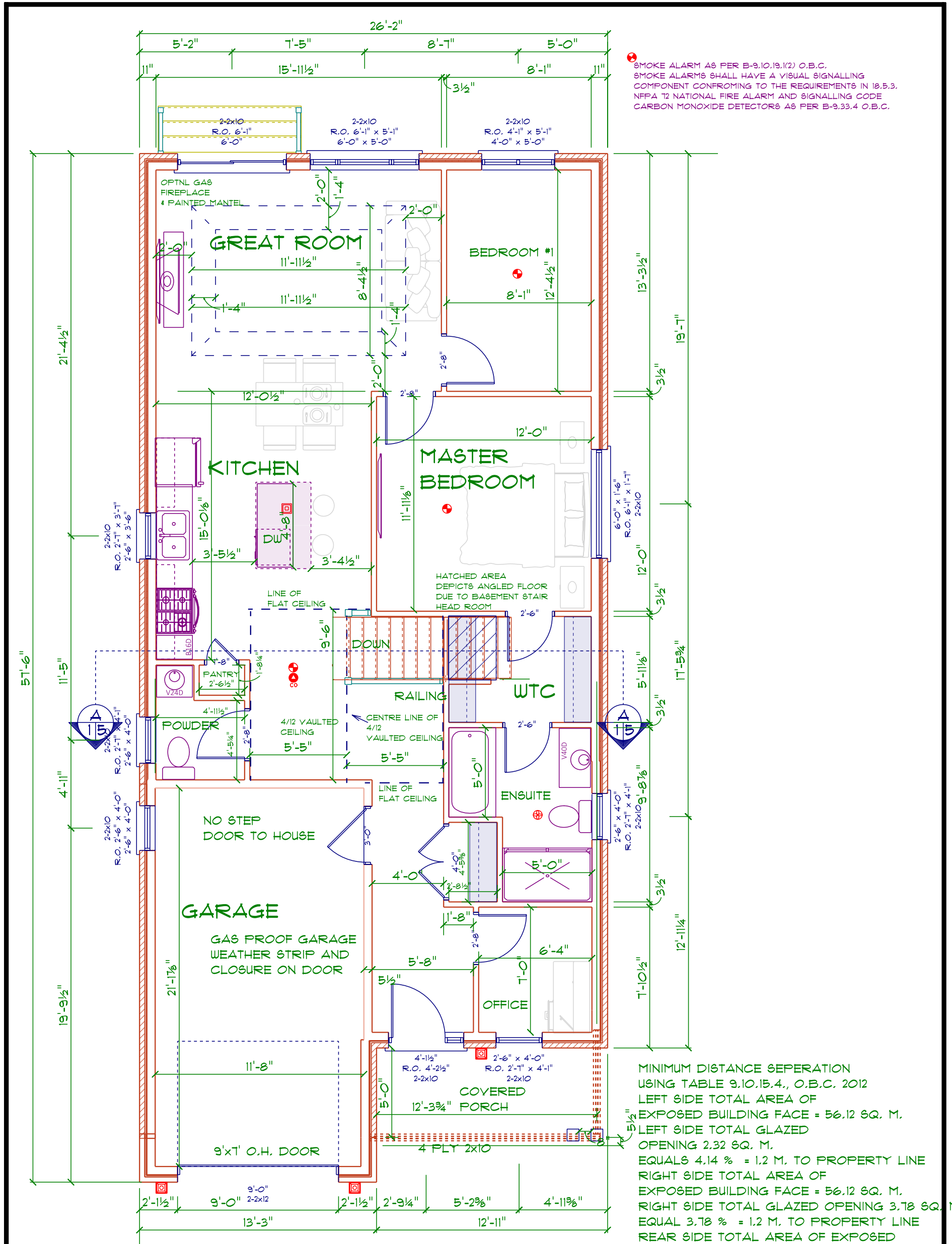


FOUNDATION
 SCALE: 3/16" = 1'-0"

DEVELOPER 	COMMUNITY 	DESIGNER INFORMATION	SECTION LETTER 	<p style="text-align: center;">Homestead Model Milverton On</p> <p>11" x 11" TEMPLATE</p> <p>DRAWN BY: MH</p> <p>SCALE: 3/16" = 1'-0"</p> <p>DATE: Tuesday, December 18, 2016</p>
BUILDER 	Design · Build · General Contracting Residential & Ag Construction Office: 1020 Old Scout Place, Waterloo, ON N2J 4G8 Ph: 519.664.2642 • Fx: 519.664.3598 www.conestogocarpenters.ca sales@conestogocarpenters.ca	PAGE NUMBERS 	PAGE: 1/6 Foundation	



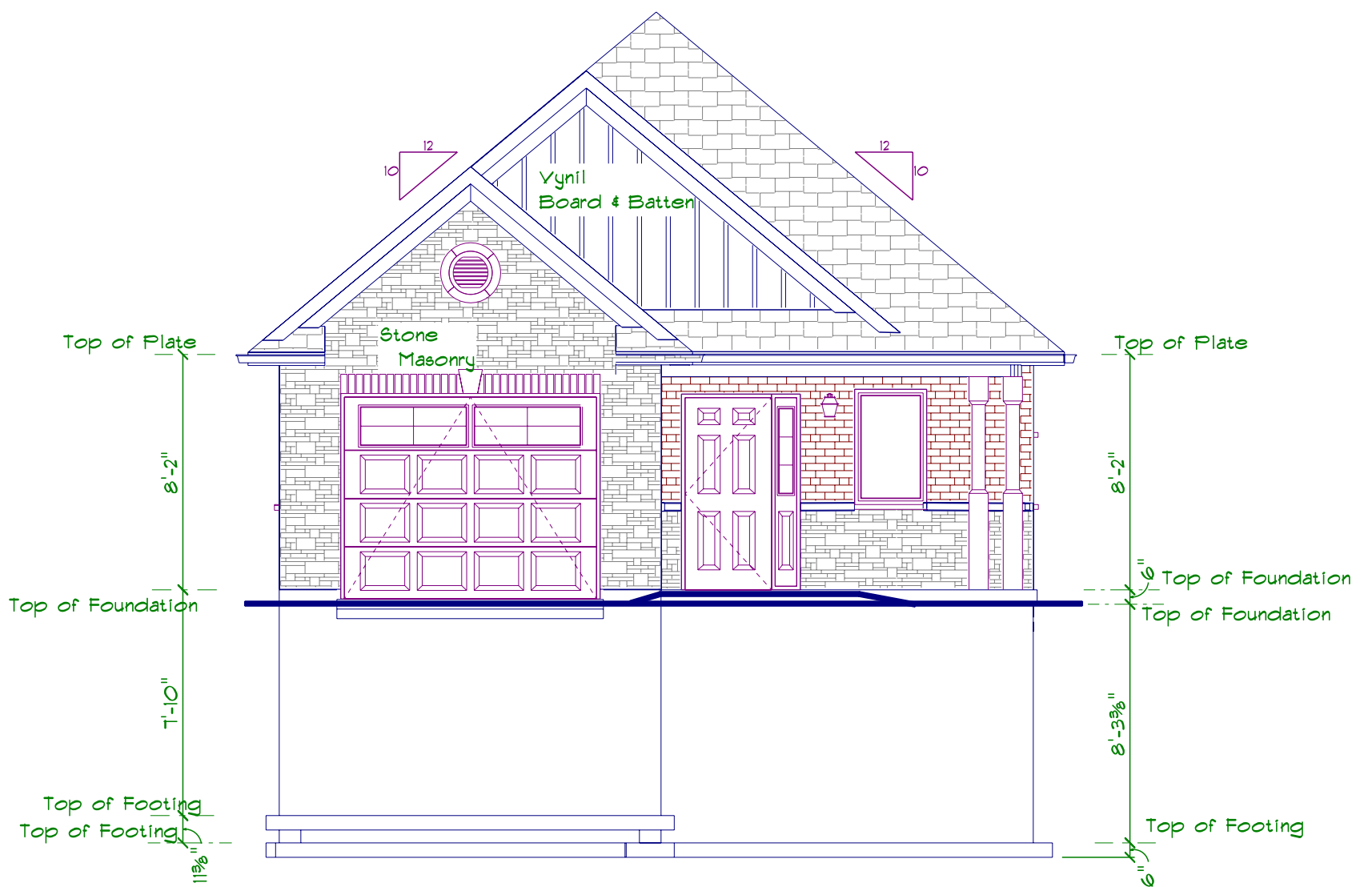
SMOKE ALARM AS PER B-9.10.19.(2) O.B.C.
 SMOKE ALARMS SHALL HAVE A VISUAL SIGNALLING COMPONENT CONFORMING TO THE REQUIREMENTS IN 18.5.3.
 NFPA T2 NATIONAL FIRE ALARM AND SIGNALLING CODE
 CARBON MONOXIDE DETECTORS AS PER B-9.33.4 O.B.C.

MINIMUM DISTANCE SEPERATION USING TABLE 9.10.15.4., O.B.C. 2012
 LEFT SIDE TOTAL AREA OF EXPOSED BUILDING FACE = 56.12 SQ. M.
 LEFT SIDE TOTAL GLAZED OPENING 2.32 SQ. M.
 EQUALS 4.14 % = 1.2 M. TO PROPERTY LINE
 RIGHT SIDE TOTAL AREA OF EXPOSED BUILDING FACE = 56.12 SQ. M.
 RIGHT SIDE TOTAL GLAZED OPENING 3.78 SQ. M.
 EQUAL 3.78 % = 1.2 M. TO PROPERTY LINE
 REAR SIDE TOTAL AREA OF EXPOSED BUILDING FACE = 25.54 SQ. M.
 REAR SIDE TOTAL GLAZED OPENING 8.91 SQ. M.
 EQUAL 34.89 % = 4 M. TO PROPERTY LINE

MAIN FLOOR

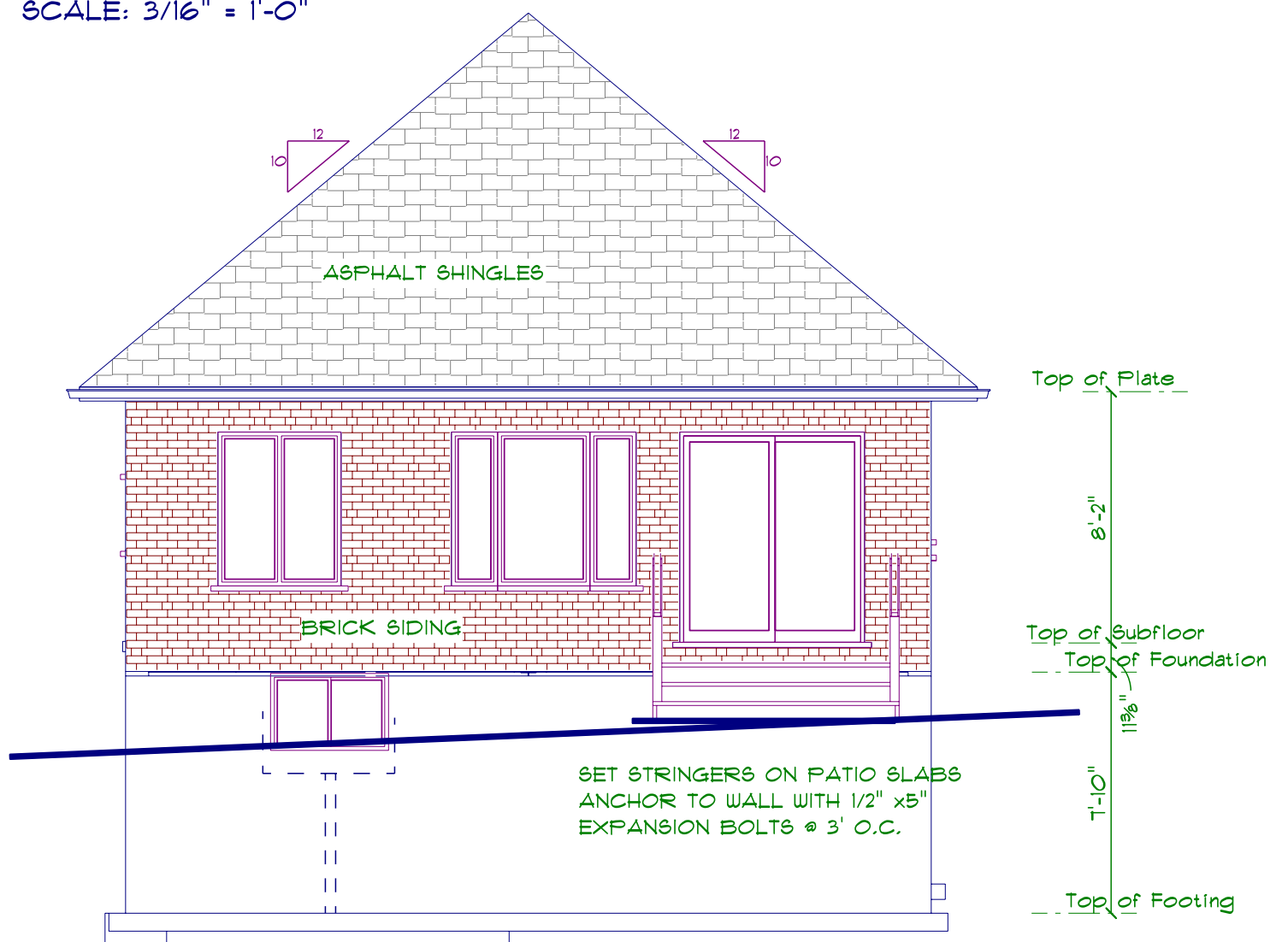
SCALE: 0.1851" = 1'-0"

DEVELOPER 	COMMUNITY 	DESIGNER INFORMATION	SECTION LETTER 	<h2>Homestead Model</h2> <p>Milverton On</p> <p>11"X11" TEMPLATE</p> <p>DRAWN BY: MH</p> <p>SCALE: 0.1851" = 1'-0"</p> <p>DATE: Tuesday, December 18, 2018</p>
BUILDER 	<p>Design · Build · General Contracting · Residential & Ag Construction</p> <p>Office: 1020 Old Scout Place, Waterloo, ON N2J 4G8 Ph: 519.664.2642 • Fx: 519.664.3598 www.conestogocarpenters.ca sales@conestogocarpenters.ca</p>		PAGE NUMBERS 	





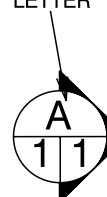

FRONT ELEVATION

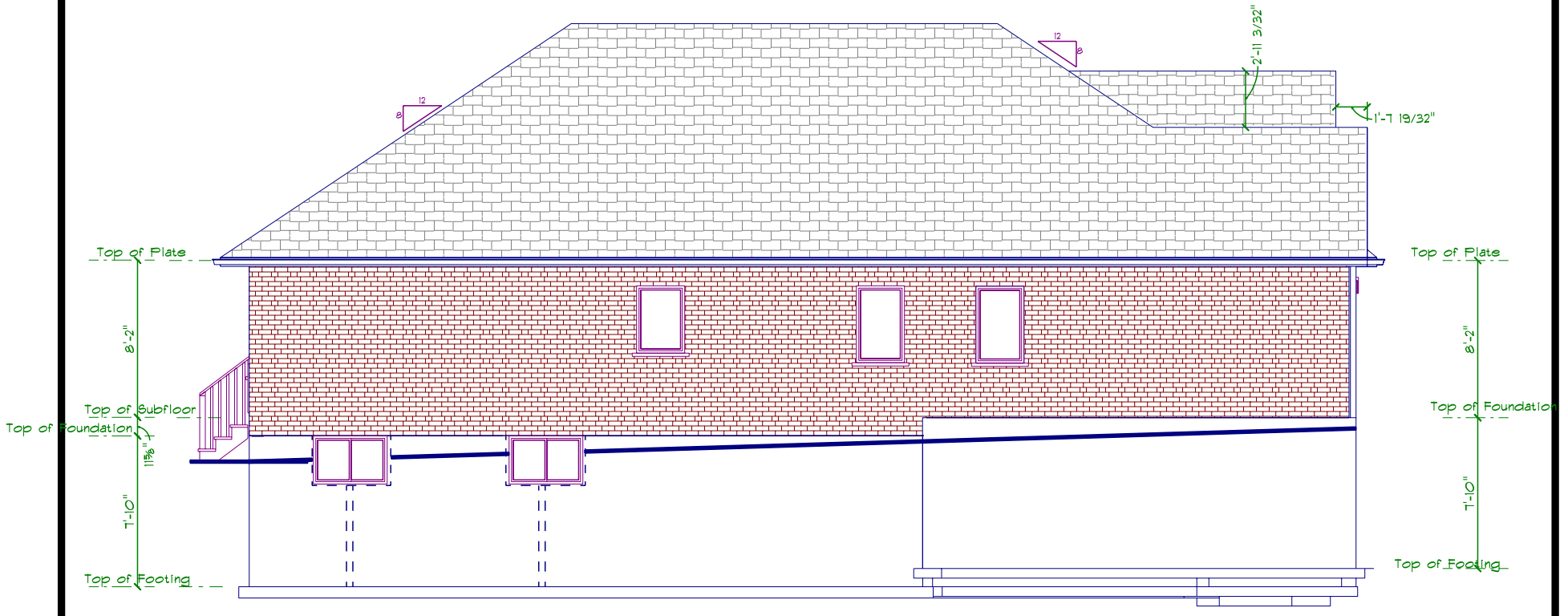
SCALE: 3/16" = 1'-0"



REAR ELEVATION

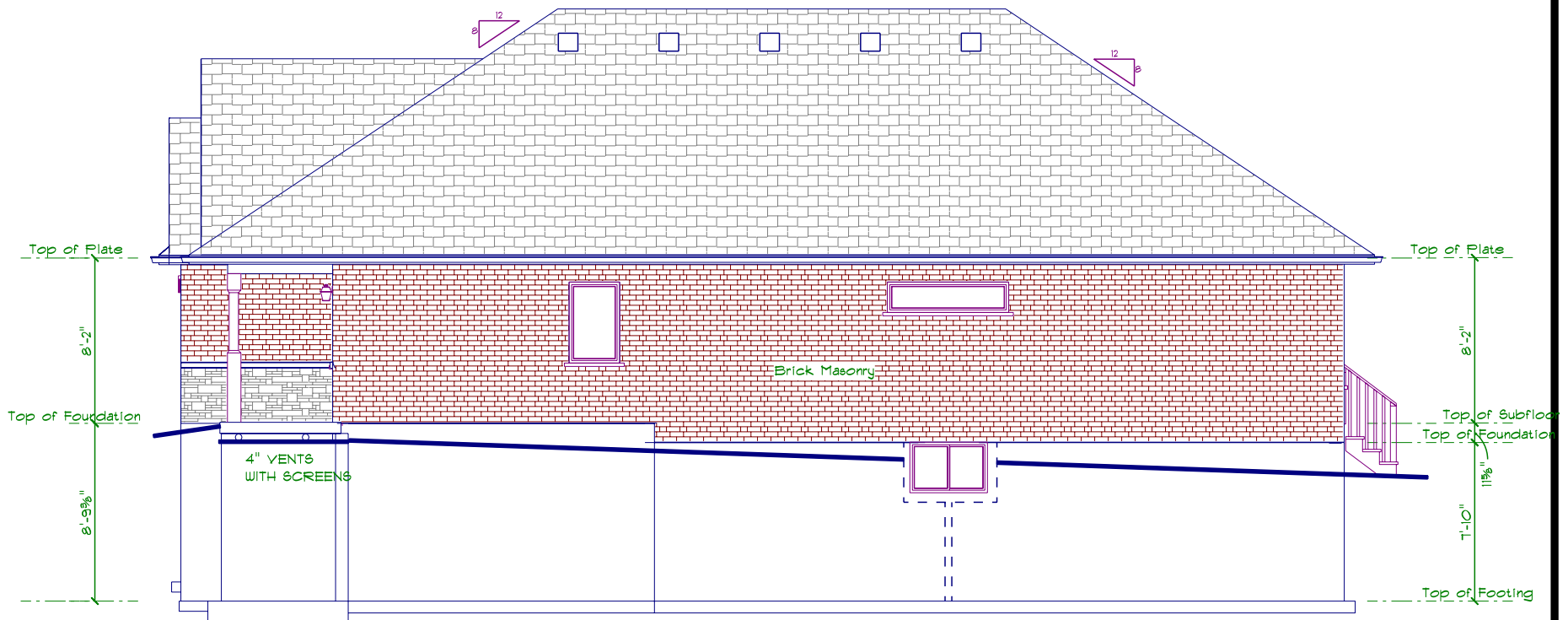
SCALE: 3/16" = 1'-0"

<p>DEVELOPER</p> 	<p>COMMUNITY</p> 	<p>DESIGNER INFORMATION</p>	<p>SECTION LETTER</p>  <p>PAGE NUMBERS</p>	<p>Homestead Model Milverton On</p> <p>11"X11" TEMPLATE</p>	<p>PAGE:</p> <p>3 / 6</p>
<p>BUILDER</p> 	<p>Design · Build · General Contracting Residential & Ag Construction</p> <p>Office: 1020 Old Scout Place, Waterloo, ON N2J 4G8 Ph: 519.664.2642 • Fx: 519.664.3598 www.conestogocarpenters.ca sales@conestogocarpenters.ca</p>			<p>DRAWN BY: MH</p> <p>SCALE: 3/16" = 1'-0"</p> <p>DATE: Tuesday, December 18, 2018</p>	<p>Elevations</p>





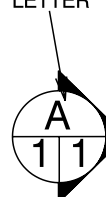

LEFT ELEVATION

SCALE: 1/8" = 1'-0"



RIGHT ELEVATION

SCALE: 1/8" = 1'-0"

DEVELOPER	COMMUNITY	DESIGNER INFORMATION	SECTION LETTER	<h3>Homestead Model</h3> <p>Milverton On</p>	
					
BUILDER	<p>Design · Build · General Contracting Residential & Ag Construction</p>			DRAWN BY: MH	PAGE:
	<p>Office: 1020 Old Scout Place, Waterloo, ON N2J 4G8 Ph: 519.664.2642 • Fx: 519.664.3598 www.conestogocarpenters.ca sales@conestogocarpenters.ca</p>		PAGE NUMBERS	SCALE: 1/8" = 1'-0"	<p>4/6 Elevations 2</p>
				DATE: Tuesday, December 18, 2018	

TYPICAL TRUSS ROOF:
 ASPHALT SHINGLES
 SYNTHETIC TAR PAPER
 1/2" ROOFING PLYWOOD c/w
 'H' CLIPS
 PRE-ENGINEERED TRUSSES @ 24" o.c.
 2x4 TRUSS BRACING
 R60 CELLULOSE INSULATION
 1X4@16" O.C. STRAPS
 6 mil POLY V.B.
 1/2" DRYWALL
 TAPED & SANDED

ROOF VENTS
 -the unobstructed vent area shall not be less than 1/300 of the insulated ceiling area

EAVES
 METAL EAVESTARTER
 3' WIDE BASESHEET
 EAVETROUGH

6" FASCIA
 16" SOFFIT
 16" HEEL

TYPICAL 2x6 BRICK EXTERIOR WALL:
 FACE BRICK
 T GAUGE CORRUGATED GALVANIZED METAL BRICK TIES
 1" AIR SPACE
 1" EXTERIOR INSULATION
 2x6 STUDS @ 16" o.c.
 R20 BATT INSULATION
 6 mil POLY V.B.
 1/2" DRYWALL
 TAPED & SANDED

TYPICAL 9" BASEMENT WALL:
 1/2" DRYWALL
 6 mil POLY VAPOR BARRIER
 2x4 STUDS @ 16" o.c.
 R 12 BATT INSULATION
 R 10 RIGID CI.
 TYPAR AIR BARRIER
 9" CONCRETE FOUNDATION WALL
 ASPHALT DAMPPROOFING
 PLATON WRAP

TYPICAL CEILING ASSEMBLY:
 1/2" DRYWALL
 TAPED & SANDED
 6 mil POLY V.B.
 1 X 4 X 16" O.C. STRAPS
 1/2" DRYWALL TAPED AND SANDED
 R 60 CELLULOSE INSULATION

TYPICAL 2x4 WALL:
 1/2" DRYWALL
 TAPED & SANDED
 2x4 STUDS @ 16" o.c.
 1/2" DRYWALL
 TAPED & SANDED

TYPICAL SILL ASSEMBLY:
 1/2" DIA. ANCHOR BOLT @ 48" o.c.
 2x6 SILL PLATE
 1/4" SILL GASKET

TYPICAL FIRST FLOOR:
 FINISH FLOOR ON
 5/8" T&G PLYWOOD SUBFLOOR
 SCREWED & GLUED
 2x10 FLOOR JOISTS @ 16" o.c. c/w 2x2
 CROSS BRIDGING
 BRIDGING 6'-10-5/8" MAX CENTRES

4"X25 MPA. POWERTROWELLED FLOOR
 6" OF 3/4" WASHED STONE



CROSS SECTION A

SCALE: 1/8" = 1'-0"

TYPICAL TRUSS ROOF:
 ASPHALT SHINGLES
 SYNTHETIC TAR PAPER
 1/2" ROOFING PLYWOOD c/w
 'H' CLIPS
 PRE-ENGINEERED TRUSSES @ 24" o.c.
 2x4 TRUSS BRACING
 R60 CELLULOSE INSULATION
 1X4@16" O.C. STRAPS
 6 mil POLY V.B.
 1/2" DRYWALL
 TAPED & SANDED

ROOF VENTS
 -the unobstructed vent area shall not be less than 1/300 of the insulated ceiling area

TYPICAL CEILING ASSEMBLY:
 1/2" DRYWALL
 TAPED & SANDED
 6 mil POLY V.B.
 1 X 4 X 16" O.C. STRAPS
 1/2" DRYWALL TAPED AND SANDED
 R 60 CELLULOSE INSULATION

1/2" DRYWALL
 6 MIL POLY
 2X6@16" O.C.
 R 20 BATS
 1/2" DRYWALL
 ALL JOINTS TAPED
 FOR GAS PROOFING

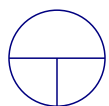
TYPICAL SILL ASSEMBLY:
 1/2" DIA. ANCHOR BOLT @ 48" o.c.
 2x6 SILL PLATE
 1/4" SILL GASKET

TYPICAL FIRST FLOOR:
 FINISH FLOOR ON
 5/8" T&G PLYWOOD SUBFLOOR
 SCREWED & GLUED
 2x10 FLOOR JOISTS @ 16" o.c. c/w 2x2
 CROSS BRIDGING
 BRIDGING 6'-10-5/8" MAX CENTRES

4"X25 MPA. POWERTROWELLED FLOOR
 6" OF 3/4" WASHED STONE

TYPICAL 2x6 BRICK EXTERIOR WALL:
 FACE BRICK
 T GAUGE CORRUGATED GALVANIZED METAL BRICK TIES
 1" AIR SPACE
 1" EXTERIOR INSULATION
 2x6 STUDS @ 16" o.c.
 R20 BATT INSULATION
 6 mil POLY V.B.
 1/2" DRYWALL
 TAPED & SANDED

TYPICAL 9" BASEMENT WALL:
 1/2" DRYWALL
 6 mil POLY VAPOR BARRIER
 2x4 STUDS @ 16" o.c.
 R 12 BATT INSULATION
 TYPAR AIR BARRIER
 9" CONCRETE FOUNDATION WALL
 ASPHALT DAMPPROOFING
 PLATON WRAP



CROSS SECTION B

SCALE: 1/8" = 1'-0"

DEVELOPER



COMMUNITY



Milverton
MEADOWS

DESIGNER INFORMATION

SECTION LETTER



PAGE NUMBERS

Homestead
Model

Milverton
On

11"X11"
TEMPLATE

DRAWN BY: MH

SCALE: 1/8" = 1'-0"

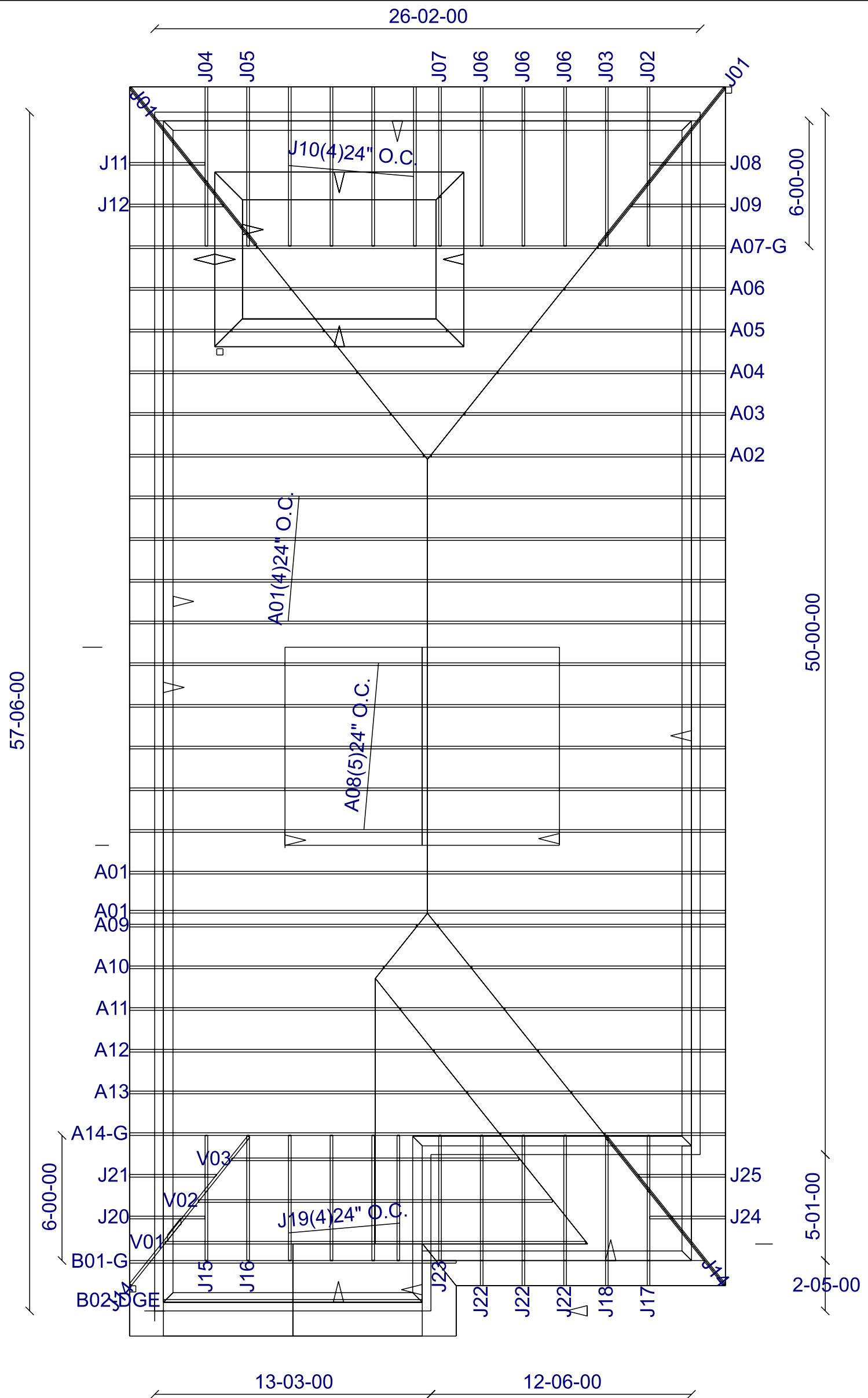
PAGE:

5/6

DATE: Tuesday, December 18, 2018 Section A







Office: 1020 Old Scout Place, Waterloo, ON N2J 4G8
 Ph: 519.664.2642 • Fx: 519.664.3598
www.conestogocarpenters.ca
sales@conestogocarpenters.ca



ROOF TRUSS LAYOUT

SCALE: 3/16" = 1'-0"

<p>DEVELOPER</p> 	<p>COMMUNITY</p>  <p>Milverton MEADOWS</p>	<p>DESIGNER INFORMATION</p>	<p>SECTION LETTER</p>  <p>PAGE NUMBERS</p>	<p>Homestead Model</p> <p>Milverton On</p> <p>11"X11" TEMPLATE</p> <p>DRAWN BY: MH</p> <p>SCALE: 3/16" = 1'-0"</p> <p>DATE: Tuesday, December 18, 2018</p>	<p>PAGE: 6/6</p> <p>Roof</p>
<p>BUILDER</p> 	<p>Design · Build · General Contracting · Residential & Ag Construction</p> <p>Office: 1020 Old Scout Place, Waterloo, ON N2J 4G8 Ph: 519.664.2642 • Fx: 519.664.3598 www.conestogocarpenters.ca sales@conestogocarpenters.ca</p>				