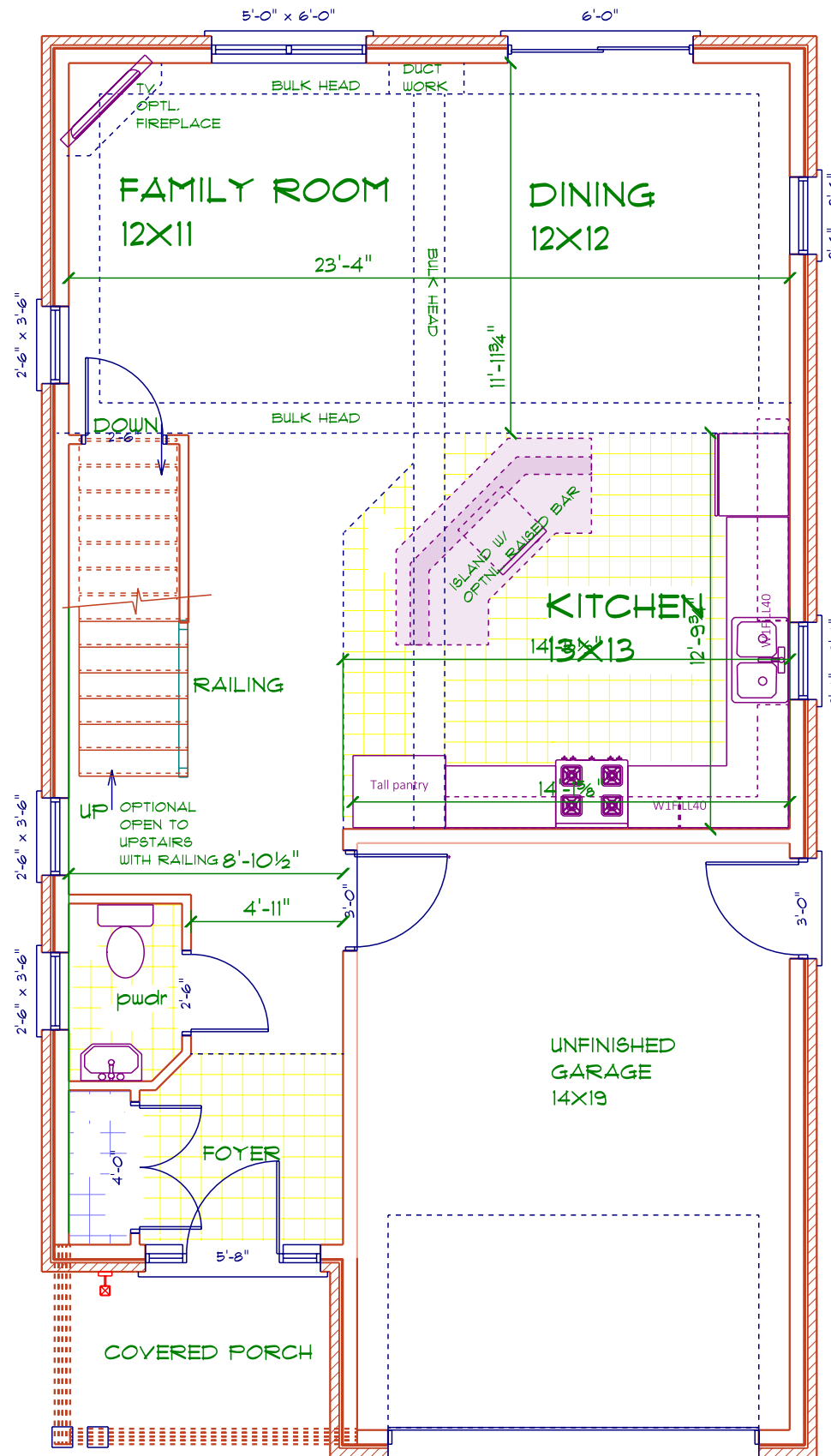


BASEMENT

SCALE: 3/16" = 1'-0"



MAIN FLOOR

SCALE: 3/16" = 1'-0"

797 sq ft
9' CEILINGS

THE MARTIN

KEY FEATURES

3 BEDROOM
2.5 BATH
1848 SQ FT

- * LARGE, DELUXE 4PC ENSUITE
- * LARGE BEDROOMS
- * SECOND FLOOR LAUNDRY
- * STONE, BRICK & VINYL EXTERIOR FINISHES
- * 2X6 WALL CONSTRUCTION W/R26.5 INSULATION VALUE
- * PREMIUM QUALITY VINYL WINDOWS AND EXTERIOR DOORS
- * 9' CEILINGS ON MAIN
- * HIGH SPEED FIBER-OPTIC INTERNET CONNECTION AVAIL.
- * OPTIONAL ISLAND
- * ZERO STEPS FROM CURB TO KITCHEN
- * COLD ROOM
- * 2X10 FLOOR CONSTRUCTION
- * 5/8 SUBFLOOR GLUED AND SCREWED
- * R 6.5 1" RIDGID EXTERIOR INSULATION

SOUTHSIDE ESTATES INC.

1020 OLD SCOUT PLACE
WATERLOO
ONTARIO
N2J 4G8

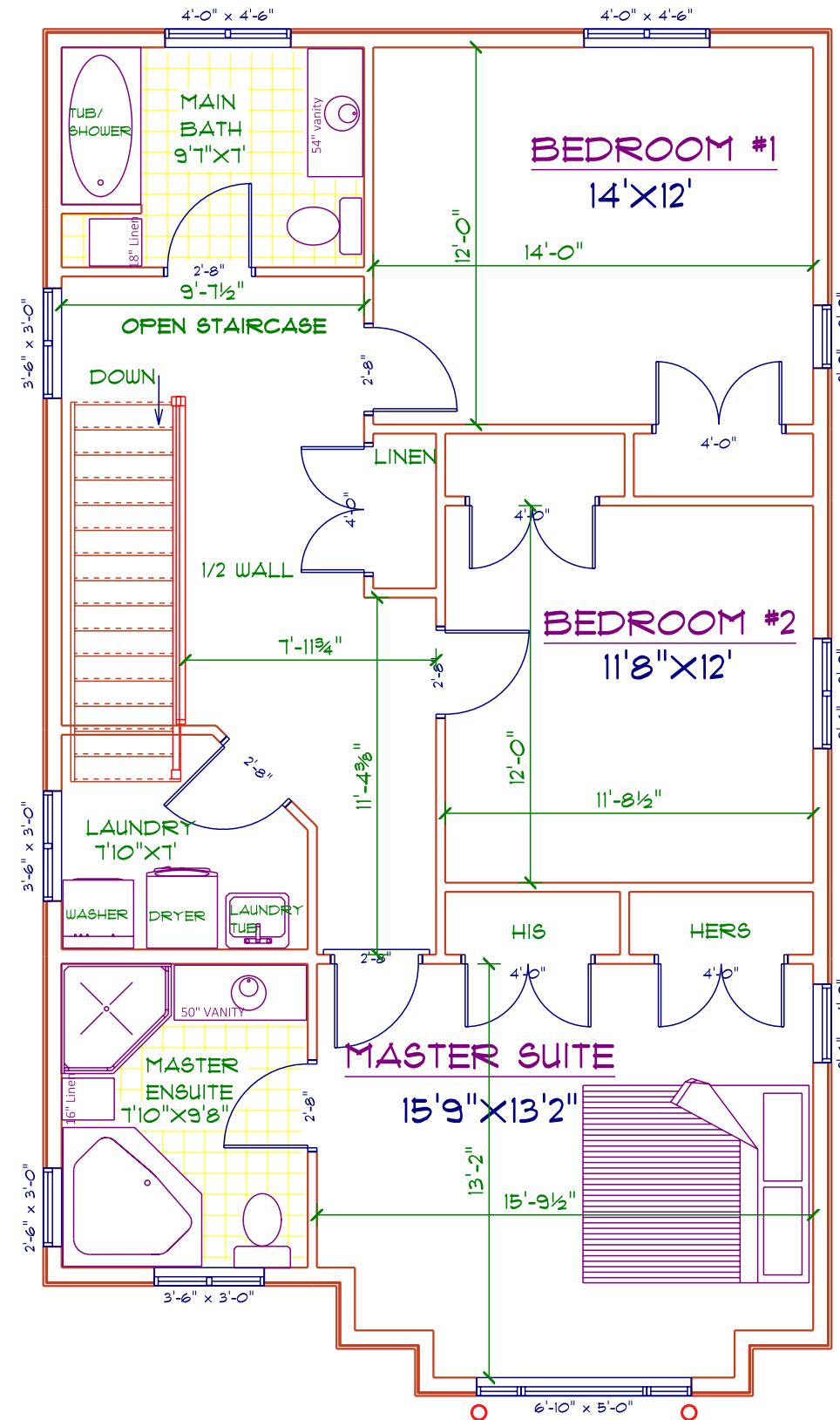


THE MARTIN

KEY FEATURES

3 BEDROOM
2.5 BATH
1848 SQ FT

- * LARGE, DELUXE 4PC ENSUITE
- * LARGE BEDROOMS
- * SECOND FLOOR LAUNDRY
- * STONE, BRICK & VINYL EXTERIOR FINISHES
- * 2X6 WALL CONSTRUCTION W/R26.5 INSULATION VALUE
- * PREMIUM QUALITY VINYL WINDOWS AND EXTERIOR DOORS
- * 9' CEILINGS ON MAIN
- * HIGH SPEED FIBER-OPTIC INTERNET CONNECTION AVAIL.
- * OPTIONAL ISLAND
- * ZERO STEPS FROM CURB TO KITCHEN
- * COLD ROOM
- * 2X10 FLOOR CONSTRUCTION
- * 5/8 SUBFLOOR GLUED AND SCREWED
- * R 6.5 1" RIDGID EXTERIOR INSULATION



SECOND FLOOR

SCALE: 3/16" = 1'-0"

SOUTHSIDE ESTATES INC.

1020 OLD SCOUT PLACE
WATERLOO
ONTARIO
N2J 4G8



THE MARTIN

KEY FEATURES

3 BEDROOM
2.5 BATH
1848 SQ FT

- * LARGE, DELUXE 4PC ENSUITE
- * LARGE BEDROOMS
- * SECOND FLOOR LAUNDRY
- * STONE, BRICK & VINYL EXTERIOR FINISHES
- * 2X6 WALL CONSTRUCTION W/R26.5 INSULATION VALUE
- * PREMIUM QUALITY VINYL WINDOWS AND EXTERIOR DOORS
- * 9' CEILINGS ON MAIN
- * HIGH SPEED FIBER-OPTIC INTERNET CONNECTION AVAIL.
- * OPTIONAL ISLAND
- * ZERO STEPS FROM CURB TO KITCHEN
- * COLD ROOM
- * 2X10 FLOOR CONSTRUCTION
- * 5/8" SUBFLOOR GLUED AND SCREWED
- * R 6.5" RIGID EXTERIOR INSULATION

SOUTHSIDE ESTATES INC.

1020 OLD SCOUT PLACE
WATERLOO
ONTARIO
N2J 4G8



FRONT ELEVATION A

SCALE: 3/16" = 1'-0"



ELEVATION B

SCALE: 3/16" = 1'-0"